

GT-2600TCAC ACCESS CONTROL CAMERA



FACE RECOGNITION/TEMPERATURE INDICATOR Detection With MASK or MOUTH COVERS

Monitor access to restricted areas using temperature readings and facial recognition thanks to Got Security GT-2600TCAC access control camera.

Thanks to its backlight management with its WDR and in conjunction with the Instant Face Recognition algorithm (500ms), you can have an accurate face reading and avoid false alarms. **Detection can be done even if using a face mask.** Register up to 22,400 faces in the database. The camera will issue an audible alert if a person's temperature is too high.

877.803.9055
www.gotvss.com

Certifications



ISO 9001:2015
Certificate



Features:

- Real-time temperature measurement in less than 1 second
- High-precision German Heimann infrared sensor, non-contact automatic detection, accurate and efficient.
- Dual modes : with or without mask detection, Fahrenheit or Celsius reading
- Body Temperature Measuring Range: 86-113°F (30-45°C)
- Temperature Measurement Accuracy: $\pm 0.5^{\circ}\text{F}$ ($\pm 0.3^{\circ}\text{C}$)
- Support facial recognition for logging and access control
- Stable Linux operating system, API is available for bulk database control.
- Flexible installations for various applications, wall mounted, desktop, mobile stand, etc.
- Different Languages are optional: English, German, French, Italian, Spanish, Portuguese, Japanese, Korean, Russian and Chinese.

Specifications:

Hardware

System	Linux operation system
Storage	16G EMMC
Image Sensor	1/2.7" CMOS
Lens	4mm

Camera Parameters

Effective Pixel	2 MP, 1920*1080
Min. Lux	Color 0.01Lux @F1.2(ICR) B/W 0.001Lux@F1.2
SNR	$\geq 50\text{db}$ (AGC OFF)
WDR	$\geq 80\text{db}$

Face Recognition

Height	1.2 - 2.2, angle adjustable
Distance	0.5 Meters
View Angle	Vertical ± 40 degree
Reco. Time	<500ms
Function	Support 22400 faces database & 100000 records

Temperature

Range	30 - 45°C/86-113°F
Accuracy	$\pm 0.3^{\circ}\text{C}$ / $\pm 0.5^{\circ}\text{F}$
Distance	0.5 meters
Response Time	<500ms

Interface

Internal Interface	RJ45 10M/100M Ethernet
Weigand Port	Support input/output 26 and 34
Alarm Output	1channel relay output (Access control gate use)
USB Port	1USB port (Can be connected to ID identifier)

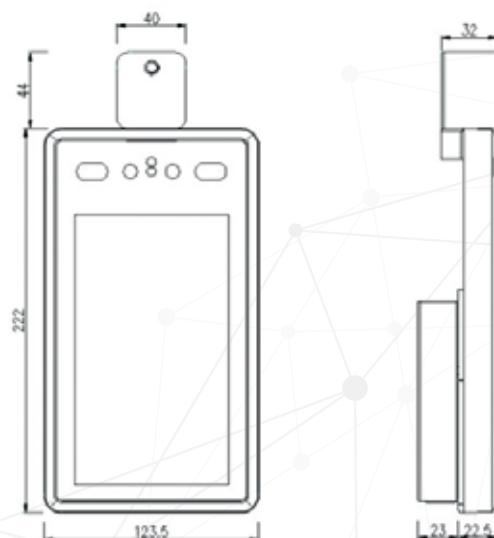
General

Power Input	DC 12V/3A
Power Consumption	15W (MAX)
Working Temperature	16-35°C / 60.8-95°F
Humidity	5-90%, no condense
Dimension	123.5(W) * 45.5(H) *266(L)mm
Weight	1.7kg

Interface:



Dimensions:



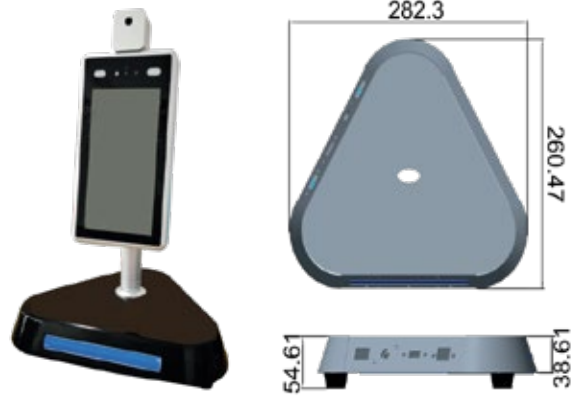
Disclaimer:

The Bolide GT-2600TCAC Thermal Camera Solution is not a medical product and is not intended to diagnose, prevent, or treat any disease or condition. This is solution is a detection device that allows companies to identify people with high temperatures. It is recommended to carry out a second check of the person detected with a non-contact thermometer.

Optional Accessories

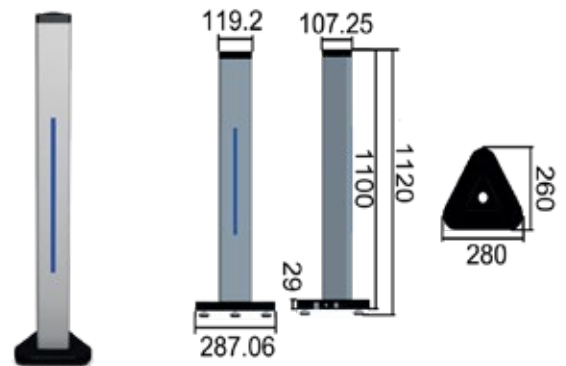
Desktop Bracket for Pole Mount Camera

Model	Linux operation system
Specification	2X USB 1X LED Light 1X Network cable 1X 12V DC Package Dimension: 320(L)X300(W)X90(H)mm Gross Weight: 2Kg
Dimension (mm)	282.3 X 260.4 X 54.61



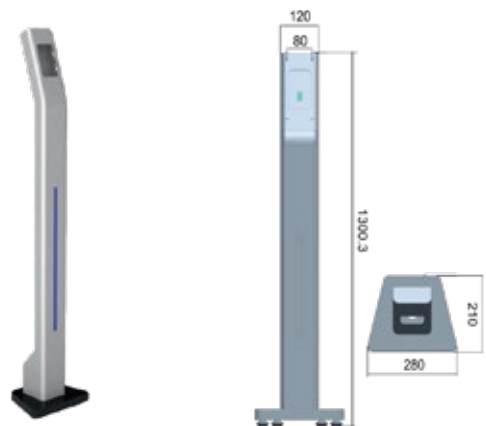
Straight Standalone Bracket for Pole Mount Camera

Model	GT2600ACTBTK
Specification	2X USB 1X LED Light 1X Network cable 1X 12V DC Package Dimension: 320(L)X300(W)X90(H)mm Gross Weight: 2Kg
Dimension (mm)	112 X 280 X 260



Standalone Bracket with Bevel for Wall Mount Bracket Camera

Model	Linux operation system
Specification	2X USB 1X LED Light 1X Network cable 1X 12V DC Package Dimension: 320(L)X300(W)X90(H)mm Gross Weight: 2Kg
Dimension (mm)	282.3 X 260.4 X 54.61



877.803.9055
www.gotvss.com